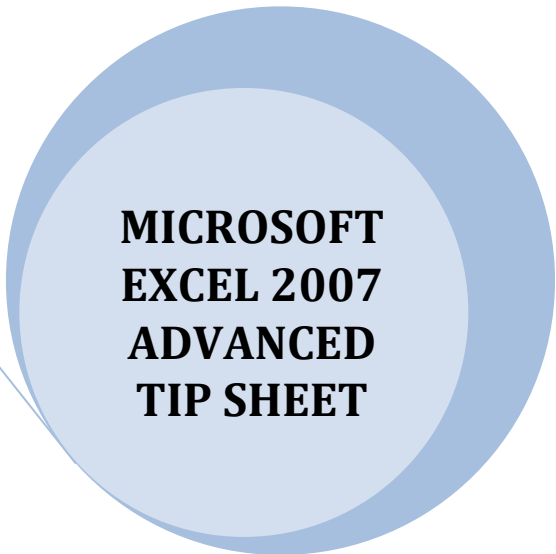


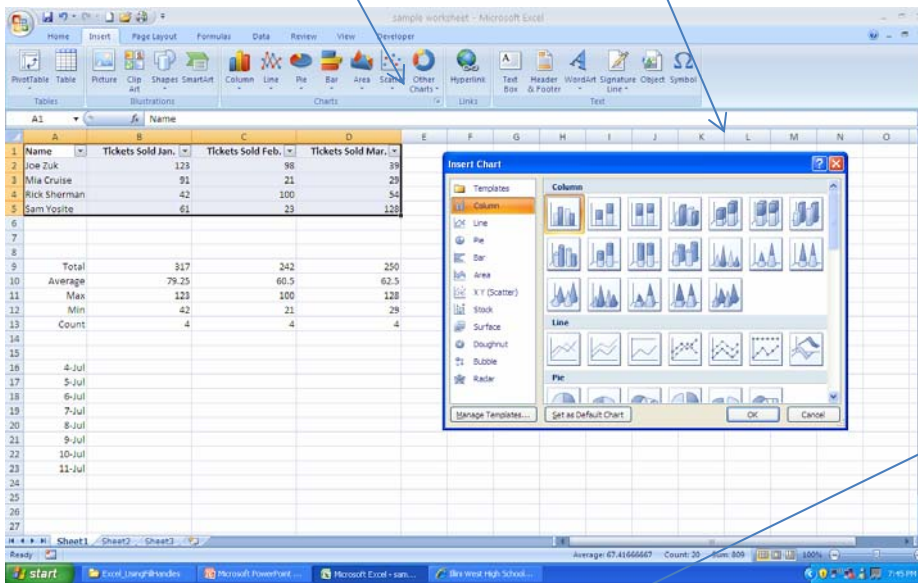
# MS Excel - CHARTS

The **Chart** feature is more intuitive in Office 2007. Highlight your area you want charted, choose the **Insert** tab, **Chart** group, and then the **Chart Dialog Box Launcher** for more options.



Presented by: Theresa Twaddle, Business Teacher  
Illini West High School District #307  
Carthage, IL – July 2009

Chart Dialog Box



**Data labels and legend has been included.**

